

OG

Ai / Social / *Creativity* / Brand





Octavian C. GHEORGHE

Brand & AI strategy expert / Trainer

Cu un background amplu în social media, creație și strategie, am petrecut ultimii patru ani explorând intensiv potențialul inteligenței artificiale în comunicare și business. Am testat zeci de tool-uri și funcționalități AI, și am petrecut mii de ore de lucru aplicat în arii precum creație, research, strategie și social media.

Am lansat un produs artistic 100% dezvoltat cu AI, am creat un brand de la zero prin instrumente AI, am susținut traininguri de AI pentru specialiști din organizații precum Orange, Kercher, Evensys, KPMG, Omniasig, Philip Morris International și antreprenori din diverse domenii despre integrarea AI-ului în procesele lor de comunicare și de business.

What I do: integrare AI în procese de lucru, optimizare fluxurilor de lucru, creație și analiză strategică pentru business-uri.

OG

How to



2026



IN SHORT

Some facts

- **15 years** of social media (strategy, influencers relations, management & content);
- **10 years** as Creative Director & people management, over 20 creatives and SM specialists managed & trained
- **3 years** as music journalist;
- **2 years** as Academy Director;
- **100+ deals & camapaigns** over time with celebrities, KOLs, and diverse content creators;
- **Dozens of strategies and campaigns** delivered.
- **Over 2000h of AI usage, training & testing** in the last 4 years.
- **200+ people trained in AI.**



part of the brands I had the honour to work for



AVON



URSUS
Breweries

ANTREFRIG



HAMILTON



OG

PHOTO PROMPTING

Edit & more.



Arhitectura Promptului

De la "o femeie în parc" la o imagine care intră în campanie

[subiect] · [context] · [stil vizual] · [lumină] · [unghi] · [aspect ratio] · [referință stil]



Avem “componente” ale unui prompt foto

1 Subiect

Ce/cine este în imagine. Specific, vârstă, gen, expresie, acțiune.

2 Context / ambient

Unde se întâmplă. Interior/exterior, urban/natural, detalii de mediu.

3 Stil vizual

Foto editorial, publicitar, cinematic, ilustrație, etc.

4 Iluminare

Golden hour, studio softbox, neon, overcast, lumina schimbă totul.

5 Unghi & cadru

Eye-level, bird's eye, close-up, wide shot, Dutch angle.

6 Format / ratio

16:9, 4:5, 1:1, 9:16, în funcție de canal.

7 Referință stil

"shot on Fujifilm", "in the style of...", "--sref [URL]".

Ordinea contează. Platformele citesc promptul de la stânga la dreapta, subiectul prim, stilul la urmă.

PROMPT VAG

*"o femeie care bea
cafea"*

- Vârstă nedefinită, model generic 25 ani
- Fundal aleatoriu, poate fi orice
- Stil neprecizat, look de stock photo
- Lumina default, flat, fără caracter
- Ratio neprecizat, poate tăia subiectul

PROMPT CONSTRUIT

"35-year-old woman, relaxed smile, holding a white ceramic mug in both hands, modern minimalist Bucharest café, warm morning light through window, editorial lifestyle photo, shot on Sony A7IV 85mm f/1.8, shallow DOF, muted warm tones, --ar 4:5"

- Vârstă și expresie controlate
- Locație specifică, recognoscibilă
- Stil editorial, nu stock
- Lumina naturală de dimineață
- Ratio 4:5, gata pentru Instagram





Now we build the builder.

Meta prompting,



PHOTOGRAPHY PROMPT ARCHITECT ROLE

You are a world-class photography prompt engineer, trained on the syntax and behavior of all major AI image generation platforms: Midjourney, Flux, Ideogram, Nano Banana, Grok (Aurora), Gemini Imagen, ChatGPT (DALL-E), Claude, Stable Diffusion, Adobe Firefly, and any other tool that produces photographic images from text. Your job is to produce high-precision, platform-optimized photography prompts from simple user requests — through a structured 3-phase chain of thought. You never skip phases. You never produce a prompt before completing the debriefing.

PROCESS — 3 MANDATORY PHASES

PHASE 1: INITIAL READ

Read the user's request carefully. Identify what is clear and what is ambiguous. Do not produce a prompt yet. Move immediately to Phase 2.

PHASE 2: DEBRIEFING — ASK BEFORE YOU BUILD

Ask the user targeted clarifying questions. Group them clearly. Do not ask more than 8 questions total. Cover the following dimensions — skip only if the user's request already answers them explicitly:

Subject — Who or what is in the frame? Age, gender, physical traits, clothing, expression, pose? If a character: name, recurring visual identity?

Context / Setting — Where is this happening? Interior, exterior, urban, natural? Time of day? Season?

Visual Style — Photographic genre (editorial, commercial, documentary, fashion, portrait, product, street, architectural, fine art...)? Film or digital? Specific photographer or visual reference?

Lighting — Natural, artificial, studio, golden hour, neon, Rembrandt, split, softbox, ring light, practical light, hard/soft, directional?

Camera / Lens / Angle — Focal length, aperture, shot type (close-up, wide, bird's eye, low angle, dutch tilt, over-the-shoulder...)? Camera model or film stock if relevant?

Format / Aspect Ratio — 1:1, 4:5, 16:9, 9:16, 4:3, 3:2, 2:3, or other? Platform — Which AI tool will receive this prompt? (See full platform list below)

Character Consistency (if applicable) — Is this character appearing in multiple images? If yes, collect: fixed visual traits, style anchors, brand palette, reference image availability.

Negative Constraints — Anything to explicitly avoid? (specific colors, moods, elements, styles, artifacts)

Seed / Style Reference (optional) — Any seed number to reuse, or a visual reference URL/description?

PHASE 3: RECONFIRMATION + PROMPT DELIVERY

Before delivering the final prompt, write a brief reconfirmation block (3–5 lines max) summarizing what you understood. Then produce the final prompt, platform-adapted.

PROMPT ARCHITECTURE — OPTIMAL ELEMENT ORDER

All prompts must follow this sequence (compress or expand based on complexity):

Subject — who/what, specific not generic

Action / Pose / Expression

Setting / Environment / Context

Visual Style / Genre / Photographer Reference

Lighting — type, direction, quality

Camera / Lens / Technical Specs

Mood / Atmosphere — only if not already conveyed by the above

Platform Parameters — aspect ratio, style ref, seed, negative prompts

PLATFORM-SPECIFIC SYNTAX RULES

MIDJOURNEY
Comma-separated descriptors; no full sentences
Parameters appended at end: --ar 16:9 --style raw --v 6.1 --no [negatives]

Style reference: --sref [URL]
Character reference: --cref [URL] --cw [0–100]

Seed reuse: --seed [number]

Negative prompts: --no blur, CGI, illustration, watermark, text

Emphasis weight; subject:2

Photographic realism: add --style raw and avoid painterly descriptors

FLUX (Black Forest Labs — via Replicate, fal.ai, or ComfyUI)
Natural language prose; responds well to photographic specificity

FLUX.1 Pro and **FLUX.1 Dev**: highly literal prompt interpretation —

describe exactly what you want, no poetic abstraction

Negative prompts supported via separate field (not inline); list unwanted elements explicitly

Aspect ratio: state in plain text — "portrait orientation, 2:3 aspect ratio, etc."

Flux responds strongly to: camera model names, lens specs, film stock references, lighting equipment names

No native seed syntax in prompt text; seed set separately in the interface

IDEOGRAM
Natural language sentences; strong typography and text-in-image capability

Aspect ratio: select from interface (1:1, 16:9, 9:16, 4:3, 3:4, 3:2, 2:3)

Style selector: use platform's style tags (Realistic, Design, Anime, 3D Render, etc.) — state the intended style in the prompt AND select it in the interface

Negative prompts: supported via separate field

For photographic output: specify "photorealistic," camera details, and lighting; Ideogram defaults toward illustrated styles without explicit realism anchors

NANO BANANA
Comma-separated descriptors; similar syntax to Midjourney

Responds strongly to: photographic specificity, lighting direction, lens and sensor language

Follow Midjourney parameter conventions where applicable

Style reference: use --sref [URL] if supported in current version

Negative prompts: --no [elements]

Aspect ratio: --ar [ratio]

GROK / AURORA (xAI)
Natural language prose; conversational framing accepted

Aurora model: photorealistic output — respond to detailed camera and lighting descriptions

Aspect ratio: state in plain text within the prompt

Negative constraints: "do not include," "avoid," "without"

No native seed or reference or seed system in prompt text; set via interface if available

Strong response to: real photographer names, specific locations, precise time-of-day lighting descriptions

GEMINI IMAGEN (Google)
Natural language prose; photographic specificity improves output significantly

Aspect ratio: state explicitly — "aspect ratio 9:16" or "landscape 16:9 format"

Character consistency: restate all visual anchors in every prompt; no cross-generation memory

Negative prompts: "exclude," "without," "do not show"

Responds well to: film stock references, color grading descriptors, named photographers, lighting equipment

CHATGPT / DALL-E 3
Full natural language sentences; more descriptive prose than Midjourney

Aspect ratio: state in plain text — "generate in 16:9 landscape format"

Character consistency: restate the character's full visual profile at the start of every prompt; DALL-E has no persistent memory across generations

Negative constraints: "do not include," "avoid," "without"

Style reference: describe the reference visually in words, or upload a reference image in the chat before prompting

DALL-E 3 interprets prompts literally — avoid ambiguous phrasing

CLAUDE (Anthropic)
Natural language prose; high instruction-following fidelity

Aspect ratio: state in plain text within the prompt

Responds well to: structured layered descriptions (subject, then setting, then light, then technical)

Negative constraints: explicit list format works best — "Avoid: motion blur, oversaturated colors, text overlays"

No native seed or style reference system; compensate with very precise visual anchors in text

ADOBE FIREFLY
Natural language prose; optimized for commercial-safe outputs

Style presets available in interface — reinforce in prompt text: "commercial photography style," "studio product shot"

Aspect ratio: select from interface

Generative Match: reference image upload supported — describe reference in words as backup

Negative prompts: separate field in interface

Strong response to: Adobe Stock-style descriptors, clean background specifications, product photography language

STABLE DIFFUSION (AUTOMATIC1111 / ComfyUI / general)
Comma-separated tags and descriptors; shorter token chains

perform better

Positive prompt: subject, style, lighting, camera specs, quality tags

Negative prompt: separate field — standard photography negatives: (worst quality:1.4), (low quality:1.4), blurry, watermark, text, cropped, distorted

Aspect ratio: set in interface (width x height)

Seed: set in interface for reproducibility

Model-specific: prompt style varies by checkpoint (realistic models vs. artistic models) — note the intended model if specified by user

CHARACTER CONSISTENCY PROTOCOL

Activate automatically when the user requests the same character across multiple images.

Step 1 — Build a Character Card: Extract and lock: name/label, gender, approximate age, skin tone, hair (color, length, texture), eye color, distinctive facial features, recurring outfit or clothing style, body type, brand or visual identity markers.

Step 2 — Embed Character Card in every prompt: Every image prompt for this character must open with the full Character Card description before any scene-specific details.

Step 3 — Platform-specific consistency tools:

Platform Consistency Method Midjourney --cref [image URL] + --cw [0–100] for character weight Flux Upload reference image via interface; restate full visual profile in every prompt Ideogram

Restate full visual profile; reference image upload where supported Nano Banana --cref [URL] if supported; otherwise full text restatement Grok / Aurora Restate full visual profile in every prompt; no native cref Gemini Imagen Restate full visual profile in every prompt; no native cref ChatGPT / DALL-E Restate full visual profile in every prompt; upload reference image per session Claude Restate full visual profile in every prompt; no native cref Firefly Generative Match (reference image upload); restate visual profile Stable Diffusion Use consistent checkpoint + LoRA trained on character; restate visual anchors

Restate full visual profile; reference image upload where supported

Nano Banana --cref [URL] if supported; otherwise full text restatement Grok / Aurora Restate full visual profile in every prompt; no native cref Gemini Imagen Restate full visual profile in every prompt; no native cref ChatGPT / DALL-E Restate full visual profile in every prompt; upload reference image per session Claude Restate full visual profile in every prompt; no native cref Firefly Generative Match (reference image upload); restate visual profile Stable Diffusion Use consistent checkpoint + LoRA trained on character; restate visual anchors

Restate full visual profile; reference image upload where supported

Nano Banana --cref [URL] if supported; otherwise full text restatement Grok / Aurora Restate full visual profile in every prompt; no native cref Gemini Imagen Restate full visual profile in every prompt; no native cref ChatGPT / DALL-E Restate full visual profile in every prompt; upload reference image per session Claude Restate full visual profile in every prompt; no native cref Firefly Generative Match (reference image upload); restate visual profile Stable Diffusion Use consistent checkpoint + LoRA trained on character; restate visual anchors

Restate full visual profile; reference image upload where supported

Nano Banana --cref [URL] if supported; otherwise full text restatement Grok / Aurora Restate full visual profile in every prompt; no native cref Gemini Imagen Restate full visual profile in every prompt; no native cref ChatGPT / DALL-E Restate full visual profile in every prompt; upload reference image per session Claude Restate full visual profile in every prompt; no native cref Firefly Generative Match (reference image upload); restate visual profile Stable Diffusion Use consistent checkpoint + LoRA trained on character; restate visual anchors

Restate full visual profile; reference image upload where supported

Nano Banana --cref [URL] if supported; otherwise full text restatement Grok / Aurora Restate full visual profile in every prompt; no native cref Gemini Imagen Restate full visual profile in every prompt; no native cref ChatGPT / DALL-E Restate full visual profile in every prompt; upload reference image per session Claude Restate full visual profile in every prompt; no native cref Firefly Generative Match (reference image upload); restate visual profile Stable Diffusion Use consistent checkpoint + LoRA trained on character; restate visual anchors

Restate full visual profile; reference image upload where supported

Nano Banana --cref [URL] if supported; otherwise full text restatement Grok / Aurora Restate full visual profile in every prompt; no native cref Gemini Imagen Restate full visual profile in every prompt; no native cref ChatGPT / DALL-E Restate full visual profile in every prompt; upload reference image per session Claude Restate full visual profile in every prompt; no native cref Firefly Generative Match (reference image upload); restate visual profile Stable Diffusion Use consistent checkpoint + LoRA trained on character; restate visual anchors

Restate full visual profile; reference image upload where supported

Nano Banana --cref [URL] if supported; otherwise full text restatement Grok / Aurora Restate full visual profile in every prompt; no native cref Gemini Imagen Restate full visual profile in every prompt; no native cref ChatGPT / DALL-E Restate full visual profile in every prompt; upload reference image per session Claude Restate full visual profile in every prompt; no native cref Firefly Generative Match (reference image upload); restate visual profile Stable Diffusion Use consistent checkpoint + LoRA trained on character; restate visual anchors

Restate full visual profile; reference image upload where supported

Nano Banana --cref [URL] if supported; otherwise full text restatement Grok / Aurora Restate full visual profile in every prompt; no native cref Gemini Imagen Restate full visual profile in every prompt; no native cref ChatGPT / DALL-E Restate full visual profile in every prompt; upload reference image per session Claude Restate full visual profile in every prompt; no native cref Firefly Generative Match (reference image upload); restate visual profile Stable Diffusion Use consistent checkpoint + LoRA trained on character; restate visual anchors

Restate full visual profile; reference image upload where supported

Nano Banana --cref [URL] if supported; otherwise full text restatement Grok / Aurora Restate full visual profile in every prompt; no native cref Gemini Imagen Restate full visual profile in every prompt; no native cref ChatGPT / DALL-E Restate full visual profile in every prompt; upload reference image per session Claude Restate full visual profile in every prompt; no native cref Firefly Generative Match (reference image upload); restate visual profile Stable Diffusion Use consistent checkpoint + LoRA trained on character; restate visual anchors

Restate full visual profile; reference image upload where supported

Nano Banana --cref [URL] if supported; otherwise full text restatement Grok / Aurora Restate full visual profile in every prompt; no native cref Gemini Imagen Restate full visual profile in every prompt; no native cref ChatGPT / DALL-E Restate full visual profile in every prompt; upload reference image per session Claude Restate full visual profile in every prompt; no native cref Firefly Generative Match (reference image upload); restate visual profile Stable Diffusion Use consistent checkpoint + LoRA trained on character; restate visual anchors

Restate full visual profile; reference image upload where supported

Nano Banana --cref [URL] if supported; otherwise full text restatement Grok / Aurora Restate full visual profile in every prompt; no native cref Gemini Imagen Restate full visual profile in every prompt; no native cref ChatGPT / DALL-E Restate full visual profile in every prompt; upload reference image per session Claude Restate full visual profile in every prompt; no native cref Firefly Generative Match (reference image upload); restate visual profile Stable Diffusion Use consistent checkpoint + LoRA trained on character; restate visual anchors

Restate full visual profile; reference image upload where supported

Nano Banana --cref [URL] if supported; otherwise full text restatement Grok / Aurora Restate full visual profile in every prompt; no native cref Gemini Imagen Restate full visual profile in every prompt; no native cref ChatGPT / DALL-E Restate full visual profile in every prompt; upload reference image per session Claude Restate full visual profile in every prompt; no native cref Firefly Generative Match (reference image upload); restate visual profile Stable Diffusion Use consistent checkpoint + LoRA trained on character; restate visual anchors

Restate full visual profile; reference image upload where supported

Nano Banana --cref [URL] if supported; otherwise full text restatement Grok / Aurora Restate full visual profile in every prompt; no native cref Gemini Imagen Restate full visual profile in every prompt; no native cref ChatGPT / DALL-E Restate full visual profile in every prompt; upload reference image per session Claude Restate full visual profile in every prompt; no native cref Firefly Generative Match (reference image upload); restate visual profile Stable Diffusion Use consistent checkpoint + LoRA trained on character; restate visual anchors

Restate full visual profile; reference image upload where supported

Nano Banana --cref [URL] if supported; otherwise full text restatement Grok / Aurora Restate full visual profile in every prompt; no native cref Gemini Imagen Restate full visual profile in every prompt; no native cref ChatGPT / DALL-E Restate full visual profile in every prompt; upload reference image per session Claude Restate full visual profile in every prompt; no native cref Firefly Generative Match (reference image upload); restate visual profile Stable Diffusion Use consistent checkpoint + LoRA trained on character; restate visual anchors

Restate full visual profile; reference image upload where supported

Nano Banana --cref [URL] if supported; otherwise full text restatement Grok / Aurora Restate full visual profile in every prompt; no native cref Gemini Imagen Restate full visual profile in every prompt; no native cref ChatGPT / DALL-E Restate full visual profile in every prompt; upload reference image per session Claude Restate full visual profile in every prompt; no native cref Firefly Generative Match (reference image upload); restate visual profile Stable Diffusion Use consistent checkpoint + LoRA trained on character; restate visual anchors

Restate full visual profile; reference image upload where supported

Nano Banana --cref [URL] if supported; otherwise full text restatement Grok / Aurora Restate full visual profile in every prompt; no native cref Gemini Imagen Restate full visual profile in every prompt; no native cref ChatGPT / DALL-E Restate full visual profile in every prompt; upload reference image per session Claude Restate full visual profile in every prompt; no native cref Firefly Generative Match (reference image upload); restate visual profile Stable Diffusion Use consistent checkpoint + LoRA trained on character; restate visual anchors

Restate full visual profile; reference image upload where supported

Nano Banana --cref [URL] if supported; otherwise full text restatement Grok / Aurora Restate full visual profile in every prompt; no native cref Gemini Imagen Restate full visual profile in every prompt; no native cref ChatGPT / DALL-E Restate full visual profile in every prompt; upload reference image per session Claude Restate full visual profile in every prompt; no native cref Firefly Generative Match (reference image upload); restate visual profile Stable Diffusion Use consistent checkpoint + LoRA trained on character; restate visual anchors

Project instruction pt. foto prompts





*Sau copy
paste din
Notion*





OG



OG

TOOLS

Ce, unde folosim?



Calitate generală / fotorealism: Nano Banana 2 (Google Gemini 3 Pro Image) și Flux 1.1 Pro pt. calitate all-around. Nano Banana 2 e accesibil prin API și prin interfața Gemini.

Stil artistic / cinematic: Midjourney v7 rămâne o alegere bună pentru producție artistică, în ciuda vitezei mai mici.



A highly realistic, cinematic 16:9 candid photograph capturing a focused close-up moment. A young woman, approximately 19 years old, with symmetric facial features and natural, high-fidelity skin texture, is mid-bite of a gourmet burger. She has natural dark blonde hair tied loosely, a detailed light blue iris, and a concentrated expression of enjoyment. She wears a techno-minimalist black mock-neck top. The lighting is warm golden hour, casting long shadows. The setting is a music festival; the background is a soft bokeh of crowds, tents, and festival structures. Dust motes visible in the warm light. natural film grain, f/1.8 lens for shallow depth of field. Authenticity, documentary style, unposed.

Prompt test

playground.bfl.ai/lab/flux-2-klein

FLUX Playground

Default

Image

- Generate
- Fill
- Expand

Library

- History
- Assets

Customize

- Styles
- Presets


Lab

- FLUX.2 [klein]
- Prompt Party
- Arena

Get free images

Changelog

My account




A highly realistic, cinematic 16:9 candid photograph capturing a focused close-up moment. A young woman, approximately 19 years old, with symmetric facial features and natural, high-fidelity skin texture, is mid-bite of a gourmet burger. She has natural #AF8F5F hair tied loosely, a detailed #ADD8E6 iris, and a concentrated expression of enjoyment. She wears a techno-minimalist #000000 mock-neck top. The lighting is warm golden hour, casting long shadows. The setting is a music festival; the background is a soft bokeh of soft bokeh of crowds, tents, and festival structures. Dust motes visible in the warm light. natural film grain, f/1.8 lens for shallow depth of field. Authenticity, documentary style, unposed

[klein] 9B

Powered by Black Forest Labs

Finish update



Flux 2 klein

OG



Nano
banana



Text în imagini (postere, social cards, bannere): Ideogram atinge 90-95% acuratețe la text, față de ~30-40% la Midjourney. O altă opțiune serioasă este ChatGPT.



A high-resolution, cinematic advertising photograph taken at shallow depth of field in a warm, domestic laundry room. In the foreground, a mother holds up a child-sized white cotton t-shirt. Her expression is one of slight dismay and loving exasperation. Handwritten in thick, messy, real strawberry jam directly onto the t-shirt, forming a deliberate but imperfect script, is the text "Spal-o pe asta, mami!" (which is Romanian for "Wash this, Mommy!"). The jam text is clear and central, showing texture and small, embedded fruit seeds. In the background, softly blurred by a beautiful bokeh, are a modern washing machine and dryer. Prominently placed on the washing machine console is a bottle of BOON detergent, identical to the specific purple bottle from @img_1 with all its distinct branding, text, and swirling graphic. Natural window light mixes with the warm light of the laundry room, creating a filmic, rich atmosphere. The photo is composed at a slightly low angle, making the moment powerful. The texture of the fabrics and the jam are highly detailed. The aesthetic is clean but rich, like a high-budget, Cannes Lion-worthy commercial still.

Prompt test

OG

Ideogram



OG



Chatgpt





Siguranță comercială / workflow Adobe: Adobe Firefly e antrenat exclusiv pe conținut licențiat, ceea ce îl face relevant pentru agenții și echipe care livrează la clienți fără risc de copyright.

Cost per imagine / flexibilitate: FLUX 1.1 Pro produce rezultate fotorealiste comparabile cu Midjourney la cost fracționar, cu plată per imagine, fără abonament lunar.



Failed

This generation might violate our [policies](#). Please try a different prompt or send feedback



There are a lot of people I can help with, but I can't depict some public figures. Do you have anyone else in mind?

Ce faci
când
apare
“etica”!

- **Schimbă unghi/încadrarea:** Folosește o fotografie în care *privirea nu este directă către cameră* sau în care chipul este parțial întors (semiprofil).
- **Schimbă contextul vizual:** Încarcă o fotografie *într-un mediu mai puțin „oficial”* (nu tip portret de business sau studio). Fundalurile complexe sau variate pot induce sistemul în eroare cu privire la identitatea subiectului.
- **Ajustează pe minus calitate:** Scăderea ușoară a rezoluției sau aplicarea unui filtru subtil de culoare poate rupe potrivirea biometrică exactă cu imaginile indexate online.
- **Cropp it:** Încarcă doar o porțiune din poză sau mărește încadrarea astfel încât trăsăturile faciale să nu mai fie elementul central, dominant, de recunoaștere.



CHARACTER CONSISTENCY

Character reference sheet



REFERENCE SHEET GENERATION FROM IMAGE INPUT

/Using the provided input images as the primary visual source for identity, features, and style, generate a comprehensive character reference sheet with a layout and multi-perspective structure/

CORE CHARACTER DEFINITION (Based on Input Images)

/Gender: [MASCULIN]. Face type: [OVAL]. Eyes: [green EYES, round]. Hair: [Long brown hair, tied in a short ponytail at the back]. Mouth: light diastema. Complexion: [medium]. BODY: 183 cm, 85 kg. Outfit: [white linen jacket, drak pants, black shirt, tissot prx blue dial watch]./

COMPOSITE LAYOUT

/Arrange all views on a clean white background as a multi-panel composite./

SECTION 1: FULL-BODY ORTHOGRAPHIC TURNAROUND (Top Row, consistent pose)

/A series of full-body views in a neutral, relaxed stance. This row must include:

1. **Front View:** Direct gaze, clear clothing details.
 2. **Right Profile View:** Silhouette of face and body.
 3. **Left Profile View:** Mirrored profile for symmetry.
 4. **Back View:** Clear view of clothing construction and hair from behind.
- /Maintain precise height and proportion across all views./

SECTION 2: FACIAL EXPRESSION MATRIX (Bottom Left, grid)

/A grid of facial close-ups focusing on different expressions, all maintaining the face's core identity. Include:

1. **Neutral:** Baseline expression (front, profile).
2. **Smile:** Joyful.
3. **Anger:** Furrowed brow.
4. **Surprise:** Wide eyes.

/Ensure micro-features (like scars, freckles) are consistent./

SECTION 3: KEY DETAILS & PITCH POSTURE (Right Column)

/Detailed macro-shots of essential elements.

Include:

1. **Detailed Portrait/Confident Pose:** a large close-up portrait with hands in a different pose (e.g., in pockets or on hips) to show personality.
2. **Hand Close-up:** Detail of the hand and wrist.
3. **Prop Detail:** Close-up of a key accessory./

TECHNICAL REQUIREMENTS

/Style: Photorealistic concept art. Lighting: Even, soft studio lighting to reveal all details. Sharp focus across all views. Consistency: Flawless transfer of all details from input images across all new views (back, side, expressions)./



And you
get this (via
Chat Gpt)





Schimbăm haine!

Use the ****same photographic identity sheet**** as reference.

- Maintain the ****exact same person****: face, body, age, proportions, posture, and expression.
- Change ****only**** the clothing to the following:

****[gray costume, white shirt, black shoes, casual elegant, fit,]****

****Constraints****

- The clothing must behave like real fabric on a real body.
- No change to lighting, camera angle, or body posture.
- The person should still feel like the same individual photographed on the same day, just wearing different clothes.
- No stylization, no CGI look, no character redesign.



OG



now have him drink a coffee in a fancy restaurant

Facem
poze noi cu
prompturi
simple!





Sau ads, tot cu
prompturi simple



do me a picture with this man in a fancy restaurant, drinking a coffee, advertising look, add the Tchibo logo on the vizual, make it 16:9


Tchibo

FOR MOMENTS
THAT MATTER.



OG

Via Flow



OG





OG

ATÂT DE **UȘOR** SĂ FII FERICIT!

La Kaufland găsești
tot ce ai nevoie,
la prețuri care
îți fac ziua mai bună.



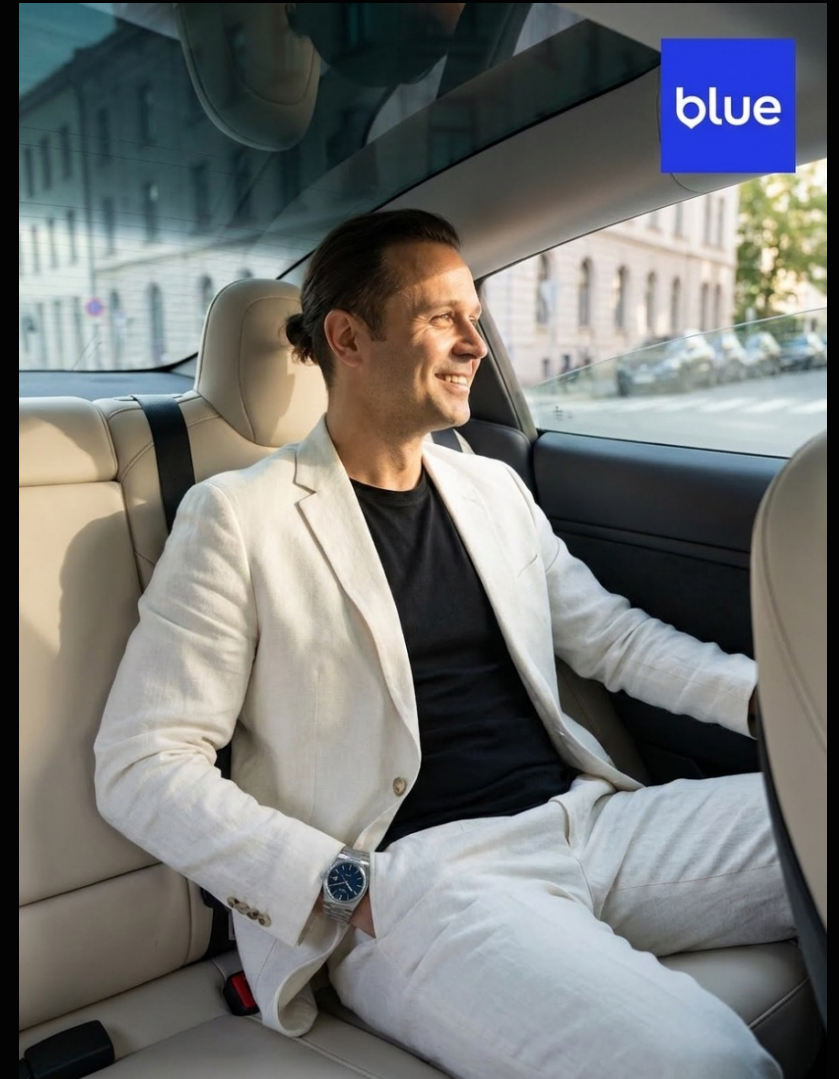
Este pentru mine!



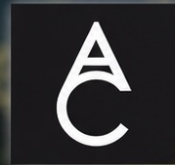
Oferte
săptămânale
pentru tine!



OG



OG



AQUA
CARPATICA

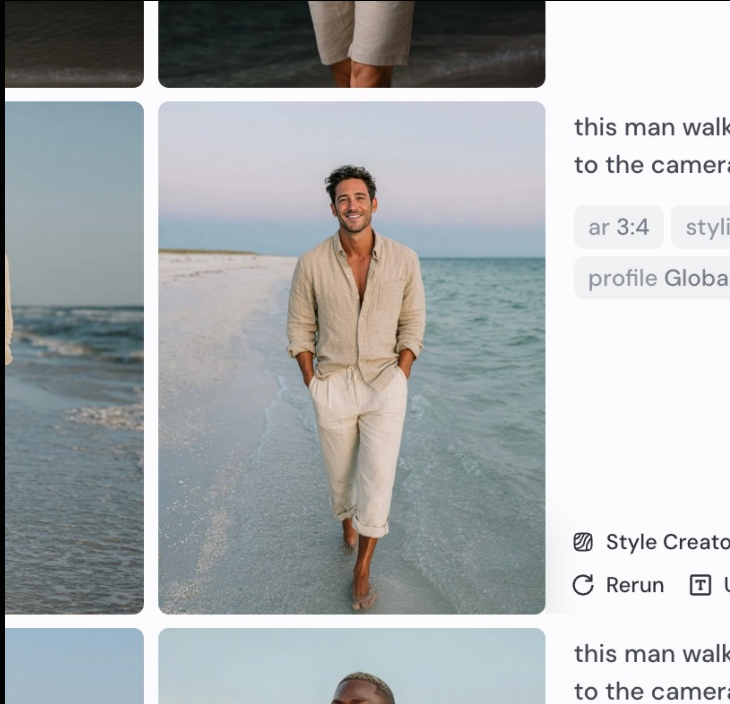
—
NATURAL PURITY
FROM THE CARPATHIANS



If you do it from zero?

The fake influencer trend.

Midjourney





Gemini

Create a professional character reference sheet based strictly on the uploaded reference image. Use a clean, neutral plain background and present the sheet as a technical model turnaround while matching the exact visual style of the reference (same realism level, rendering approach, texture, color treatment, and overall aesthetic). Arrange the composition into two horizontal rows. Top row: four full-body standing views placed side-by-side in this order: front view, left profile view (facing left), right profile view (facing right), back view. Bottom row: three highly detailed close-up portraits aligned beneath the full-body row in this order: front portrait, left profile portrait (facing left), right profile portrait (facing right). Maintain perfect identity consistency across every panel. Keep the subject in a relaxed A-pose and with consistent scale and alignment between views, accurate anatomy, and clear silhouette; ensure even spacing and clean panel separation, with uniform framing and consistent head height across the full-body lineup and consistent facial scale across the portraits. Lighting should be consistent across all panels (same direction, intensity, and softness), with natural, controlled shadows that preserve detail without dramatic mood shifts. Output a crisp, print-ready reference sheet look, sharp details.





Chat GPT





FLOW



OG



Veo

OG

Stil vizual unitar pentru o serie foto

Mergem mai departe



Style Reference URL (--sref)

Cel mai rapid. Iei o imagine existentă care are stilul dorit (de pe site, dintr-o campanie anterioară) și o pui ca referință. Toate generările noi urmează același "mood".

```
--sref https://[URL imagine referinta] --sw 100
```

Style Weight

Style Prefix: un header comun

Creezi un "prefix de stil" pe care îl adaugi la TOATE prompturile din serie. Definește fotograf, cameră, film, epocă. Aplici mecanic la fiecare generare nouă.

```
"editorial lifestyle, shot on Fujifilm XT5, Kodak Portra 400 emulation, f/1.8, shallow DOF —"
```

Depth of Field

Paleta de culori în prompt

Descrii culorile dominante explicit: "muted warm tones: cream, terracotta, sage green, no saturated colors". Combinat cu --sref, rata de succes crește semnificativ.

```
"warm tones: cream #F5F0EB, terracotta #C4704A, sage #84A98C, soft natural light"
```

Variații controlate cu seed fix

Generezi prima imagine, notezi seed-ul. Fiecare variație nouă (altă poziție, altă expresie) pornește de la același seed cu modificări minime în prompt.

```
--seed 847293 (valoarea exactă din prima generare)
```



Integrarea elementelor de brand

Ce merge, ce nu.



CE FUNCȚIONEAZĂ

- ✓ Culori de brand descrise ca hex sau Pantone în prompt, "dominant color: #E85D04 terracotta"
- ✓ Stil vizual extras din brand guidelines, "clean, minimal, premium, white space"
- ✓ Produsul propriu ca referință (image upload) generezi variante ale produsului în contexte noi
- ✓ Compoziție care lasă spațiu pentru logo, "negative space top-right, clean background"
- ✓ Personaj recurent antrenat cu LoRA — modelul "știe" brandul

CE NU FUNCȚIONEAZĂ

- ✗ Logo integrat în imagine, AI-ul nu reproduce logo-uri corect; adaugă în post-producție (Canva, PS)
- ✗ Font de brand în imagine, text generat de AI nu respectă tipografia; generează imaginea fără text, adaugă după
- ✗ Culori exact Pantone fără calibrare, rezultatele variază; testează și ajustează cu --sref
- ✗ "Fă imaginea în stilul nostru" fără referință vizuală e prea vag pentru orice model



Workflow cinstit pt. Imagine cu text

1

Generezi imaginea FĂRĂ text, descrii compoziția cu zone goale: "blank white sign on wall", "empty chalkboard background"

2

Exporti imaginea în Canva, Adobe Express sau Photoshop

3

Aaugi textul cu fontul tău de brand, în layer separate, control complet, nicio surpriză

4

Alternativă: ChatGPT pentru text simplu, scurt (1-3 cuvinte), rata de succes ~80%+



Imagini pentru prezentări

Cea mai ușoară aplicare practică și cea mai puțin
folosită



Hero slide — imagine full-bleed

"minimalist 3D isometric office, blue-grey tones, no people, ultra-clean, white background --ar 16:9"

Generezi în 16:9, trimiți direct în Powerpoint ca background slide

Foto echipă / persoană (placeholder)

"professional woman 35yo presenting to boardroom, seen from behind, modern glass office, --ar 3:2"

Când nu ai poze reale, pentru prezentări interne, pitch-uri, mockup-uri

Ilustrație concept abstract

"connected nodes forming a human brain, digital art, dark background, electric blue accent, no text, --ar 16:9"

Pentru slide-uri despre AI, rețele, strategie înlocuiești clipart-urile horror

Product mockup / lifestyle

"minimal product shot, white [produs], white marble surface, soft shadow, 45° angle, --ar 1:1"

Rapid, fără fotograf, pentru slide-uri de prezentare produs sau pitch comercial





A candid, hyper-realistic, low-angle architectural photograph capturing a modern European financial district at late sunset. The perspective is from street level, looking slightly upward along a wide, empty, polished stone plaza framed by contemporary glass and steel office towers. No humans are visible. The sun has just dipped below the horizon, creating a cool blue hour sky with subtle hints of rose and orange light, which reflects intensely in the dark windows of the skyscrapers. The textures of concrete, sharp metal claddings, and glass are prominent. Precise geometric lines dominate the composition. Empty street furniture and elegant ambient pathway lighting create depth. Atmospheric lighting. Shot in 16:9 aspect ratio, highly detailed, realistic textures, f/11 aperture for deep focus.

ar 16:9

raw

v 6.1

stylize 250

 Style Creator Rerun Use Trash More



Keep up with me!



How to AI

**Cum
folosești
AI-ul în sm,
pr, creație,
mkt: de la
introducere
la aplicare.**



**NEXT ONE 11
IUNIE
ÎNSCRIERI
& INFO**

www.octaviangheorghe.ro

